

JEPPESEN 30 MAR 94 (19-1)

LIQL
 Elev 39' / 12 m
 N43 49.7
 E010 34.7
 3.2 NM ESE Lucca

LUCCA
 TASSIGNANO
 ITALY

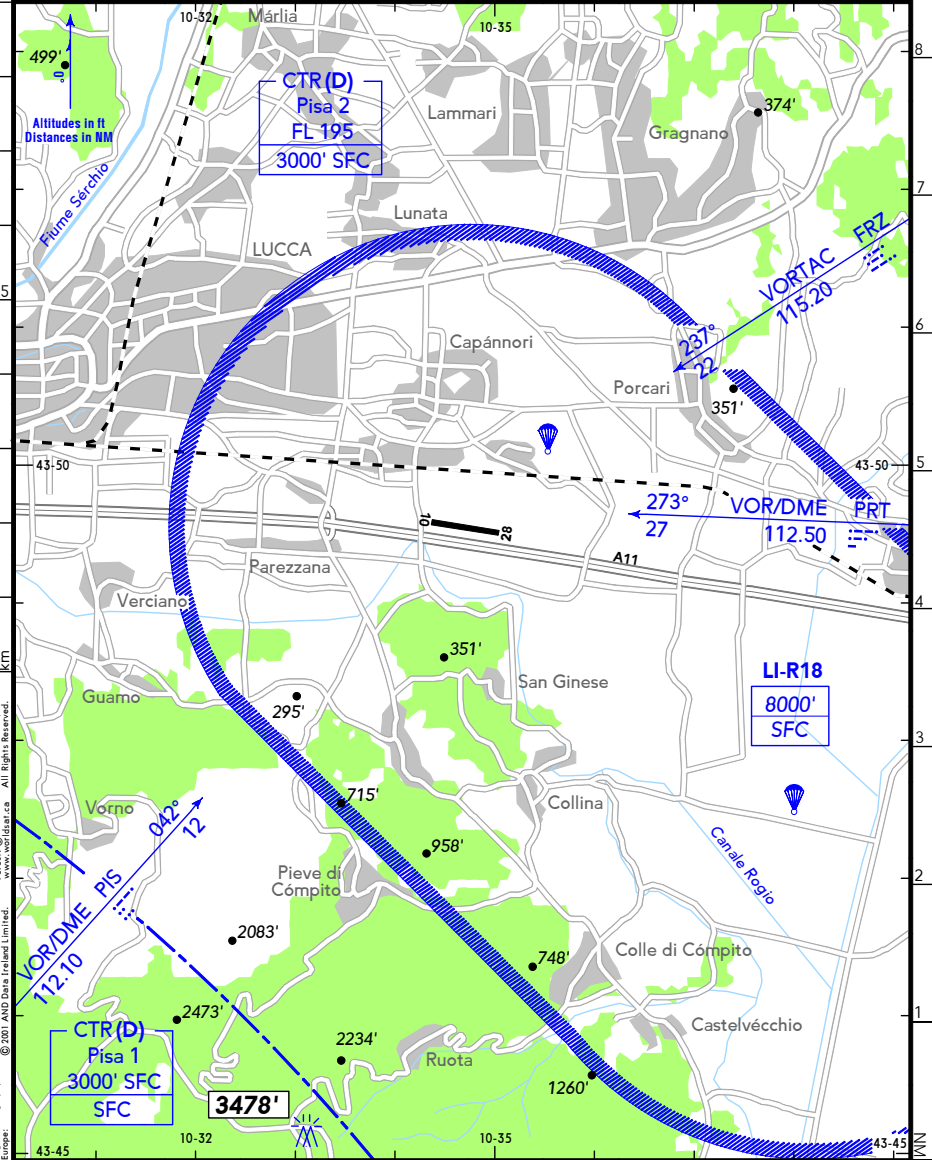
Pisa CTR clearance
 PISA RADAR **124.27 122.10**

LI-R18 clearance
 PISA APPROACH **126.07 122.10**

(AFIS)

LUCCA INFORMATION **122.50**

RWY	ILS	RWY	ILS

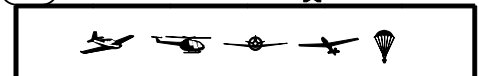


CHANGES: Communications.

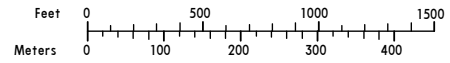
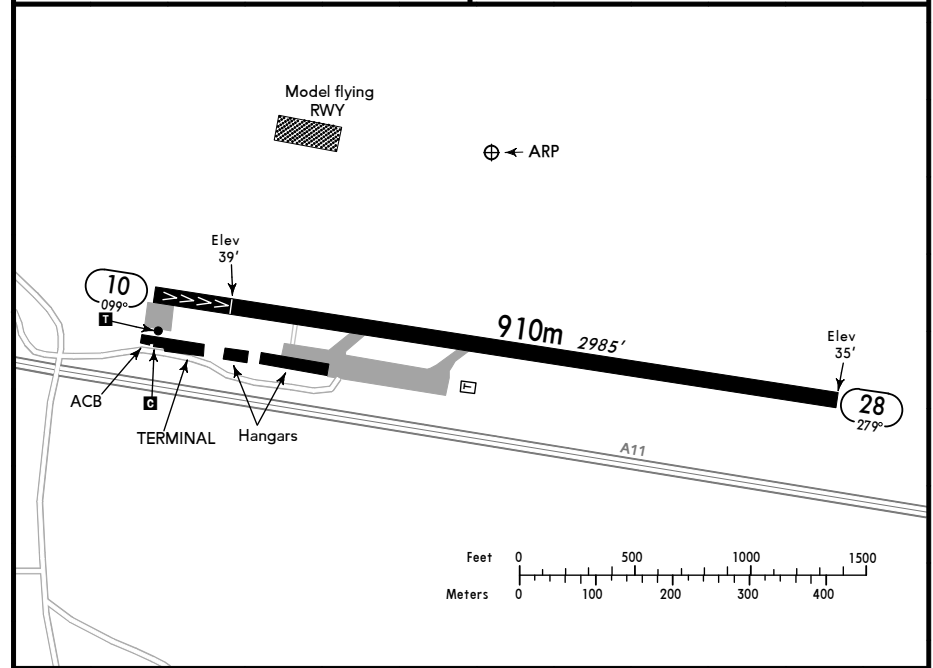
© JEPPESEN, 1986, 1994. ALL RIGHTS RESERVED.
 BOTTLANG AIRFIELD MANUAL®

LUCCA (19-2) 30 MAR 94 JEPPESEN

TASSIGNANO
 ITALY



(FIS)
 MILANO INFORMATION **134.30**



Icons for taxi, fuel, and other services.

RWY No	Dimension (m) - Surface	TORA (m)	LDA (m)	Strength	Lights
10	910 x 18 Asphalt	910	830	5t SIWL	—
28		910	910		

Note: See also PISA 10-1V.
 Due to location within LI-R18 air traffic is prohibited, except when otherwise cleared by PISA APPROACH on Tue, Thu & Fri (Hol excluded).
 Flights to/from the AD are only allowed in VFR.
 Traffic circuit for engine ACFT S of RWY, gliders N of RWY.
 Fence 2 m high, 25 m in front of RWY head 28.
 Trees up to 118' in front of both THRs.
 Pay attention to parachuting.
 Avoid built-up areas near aerodrome.

CHANGES: Lighting & WDI withdrawn.

© JEPPESEN SANDERSON, INC., 1986, 1994. ALL RIGHTS RESERVED.
 BOTTLANG AIRFIELD MANUAL®